



Hydraulic Pumps





Sauer-Danfoss-Daikin manufacture Open Circuit Piston Pumps and Axial Piston Variable Displacement Pumps. They offer solutions for on and off highway vehicles and equipment for construction, material handling, farm industry and many other areas.

Variable displacement piston pumps are a perfect choice when equipping applications like fork lift trucks, tractors and road rollers.

Open Circuit Piston Pumps are a new product family and provide a new variable OC Pump, designed primarily for the mobile equipment market. This Pump has been optimized to excite the marketplace with regard to options, life, package size and installation cost.



Series 45 Axial Piston Variable Displacement Pumps

Robust and easily serviced design
8 sizes of variable displacement pumps
Compact and light-weight
Complete family of control systems.

The demands of your machine's work functions have met their match. The Series 45 Pumps are uniquely designed to optimize your hydraulic systems.

Series 45 Open Circuit Axial Piston Pumps are highly efficient, reliable and low in noise in fact, everything you require for a highly responsive hydraulic system.

Designed with load sensing and pressure compensated flow controls, they work perfectly with their hydraulic PVG Proportional Valves.

Expect a cost-effective operation and longer pump lifetime.





TPV Series Piston Pumps

Pump displacements 28, 45 & 71 cc per revolution.

Parts available to suit sizes 28,45, 71, 100 & 140.

High operating system pressures.

Available with P and PF controllers.

Parts are fully interchangeable with leading brand A10V pumps.

Axial piston, swash plate design.





Sample Part No. TPV 71-PF-R-S-TDC

- TPV** Pump type
Variable Piston
- 71** Available displacements
28, 45 & 71 cc/Rev
- PF** Pressure controller
P= Pressure
PF= Pressure & Flow
- R** Rotation
R - Right Hand
L - Left Hand
- S** Shaft Type
K Keyed
S Splined
- TDC** Drive Option
TDA Thru Drive SAE - A
TDB Thru Drive SAE - B
TDBB Thru Drive SAE - BB
TDC Thru Drive SAE- C
N No Thru Drive
(All pumps with side ports)



Performance Specifications

PUMP SIZE	CC/ REV	MAX SPEED RPM	MAX OPERATING PRESSURE	FLOW @ 1500 RPM L/Min	INPUT POWER KW @ 280 Bar	WEIGHT Kg
28	28	3000	280	42	20	15
45	45	2600	250	68	32	21
71	71	2200	280	107	50	33

Tidal Part number TPV71-PF-R-S-TDC. Compares with Competitor Part Number A10V71DFR1/31RPSC62K07

Vickers Vane Pumps

Eaton's Vickers brand pioneered Vane technology has produced fixed displacement pumps with low noise and high efficiency. Vickers Vane products have been optimized for both mobile and industrial markets. Their modular designs allow for flexibility in displacement, mounting, and port options. A cartridge kit design feature allows for easy repair and interchangeability between pumps.

A wide variety of pressures and displacements are available in each of the product families:

V10 & V20 Fixed Displacement Vane Pumps

V Series Fixed Displacement Vane Pumps

VQ(H) Series Fixed Displacement Vane Pumps

VMQ Series Fixed Displacement Vane Pumps

VTM Fixed Displacement Vane Pumps

Variable Displacement Vane Pumps



External Gear Pumps

In the 1960s, Eaton began manufacturing gear pumps and gear motors for the growing aerospace industry. Today, they deliver gear products to worldwide customers in most mobile and industrial applications.

Eaton Gear Products combine state of the art innovation and manufacturing processes. These products are designed to satisfy global customer requirements for higher pressure, quiet operation, long life, and a full range of options and features.

Eaton offers a wide range of gear pumps. Many functions, such as valves and controls, are directly incorporated in the products in order to optimize space and costs for the system. With their products you can choose preferred configurations and multiple combinations, or they can design a product to fit your specific application.

Eaton hydraulic gear pumps are suited for a wide range of equipment applications from construction, agriculture, material handling, aerial lifts, turf care and much more. In addition, they can develop solutions that make it possible to obtain hydraulic systems, such as, for example, the operation of a fan drive system for mobile vehicles.



Piston Open Circuit - Industrial

Eaton offers a wide range of Open Circuit Piston Pumps for medium duty application for Industrial markets. Open Circuit Piston Pumps offer the flexibility needed to drive a broad range of fluid power systems. Open circuit industrial products under the Vickers brand span a wide range of displacements providing a solution for your industrial needs.

Eaton's Open Circuit Piston Pumps service markets that include:

- Machine Tools
- Molding
- Primary Metals
- Automotive Plant
- Power Generation
- Port Machinery
- Entertainment
- Oil & Gas
- Civil Engineering



Piston Closed Circuit - Industrial

Eaton **Hydrokraft** product offers robust and reliable high-pressure industrial closed circuit piston pumps. The axial piston pumps feature cradle-type swash plate designs that provide reliable operation as well as long life.

Hydrokraft pumps are built with a through drive, which enables multiple pump installation from a single shaft. Multiple pump combinations are also available from the factory. These products are built for closed circuit applications with integrated valves and filters; an entire closed circuit system is available in one package.





PGP020 Series

Parker Hannifin's PGP020 Gear Pumps are an ideal power for the truck industry. With the ½" gears, it measures only 6" from mounting flange to the port end cover and weighs only 25 lbs. A variety of drive shafts and mounting styles are offered to meet your needs. Standard features include rigid, one-piece drive shaft and gears and pressure-balanced thrust plated, which assure top efficiency. A rugged, high-strength, cast iron body provides durability.

Multiple Units

PGP020 Pumps can be assembled in tandem to provide additional pump flow from on the drive shaft. Each gear section is connected to the drive shaft by a connecting shaft. The strength of the shafts (their PL factor) determines the maximum gear width the pump or motor can turn at a given pressure





PGP030/050/075 Series

The PGP30/031, 050/051 and 075/076 Hydraulic Gear Pumps are manufactured with hi-tensile grey iron. They offer a wide variety of drive shafts that are designed for high-torque applications and unique pressure balanced thrust plates contribute to optimized performance.

Units are available in single and multiple section configurations, along with various Valve and Relief Valve options.

PGP030/031 Features

Single and Multiple Pump, Flow Divider, Piggyback and Winch Motor configurations are available

Speeds up to 2400 rpm

Pressures up to to 3000 psi (206 bar)

Output flows up to to 41 gpm (155 lpm)

Optional priority or two-speed valves are available

PGP050/051 Features

Single and Multiple Pump, Flow Divider, Piggyback and Winch Motor configurations are available

Speeds up to 2400 rpm

Pressures up to to 3000 psi (206 bar)

Output flows up to to 66 gpm (250 lpm)

Optional priority, two-speed, and unloader valves are available

PGP075/076 Features

Single and Multiple Pump, Flow Divider, Piggyback and Winch Motor configurations are available

Speeds up to 2400 rpm

Pressures up to to 3000 psi (206 bar)

Output flows up to to 128 gpm (484 lpm)

Optional two-speed valves are available





PGP500 Series

PGP500 series Gear Pumps are an advanced performance version of the international "bushing block" style pumps. PGP500 series Gear Pumps offer superior performance, high efficiency and low noise operation at high operating pressures. They are produced in three frame sizes (PGP505, PGP511, PGP517) with displacements ranging from .12 to 3.17 cir (2 to 52 ccr). A wide variety of standard options are available to meet specific application requirements worldwide.

High efficiency

Pressure balanced bearing blocks assure maximum efficiency under all operating conditions.

Application flexibility

International mounts and connections, integrated valve capabilities and common inlet multiple pump configurations Provide unmatched design and application versatility.

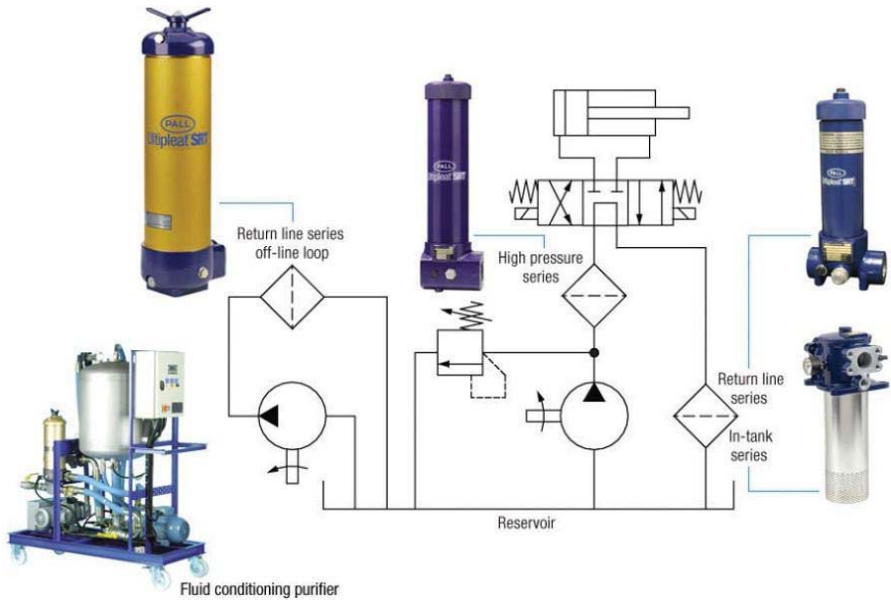
Advantages

Up to 4000 psi (275 bar) continuous operation High strength materials and large journal diameters provide low bearing loads for high pressure operation.

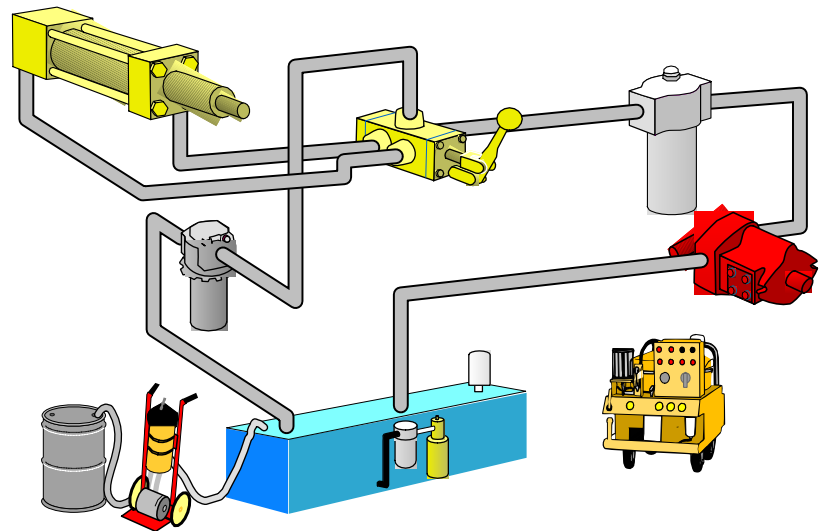
Low noise

The 500 Series has optimized flow metering to provide reduced pressure pulsation and exceptionally quiet operation.





Fluid conditioning purifier





“Your Fluid Power, Filtration & Lubrication Engineers.”